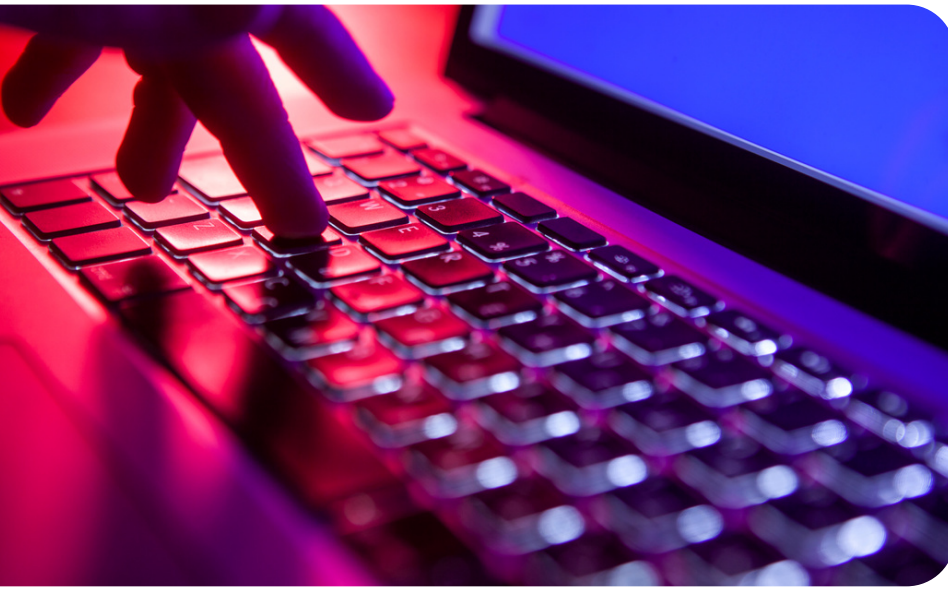


Cybersecurity Assessment



CHALLENGE

Like many higher education institutions, Monterey Peninsula College had multiple cybersecurity concerns. They needed to prioritize their resources to resolve the most pressing cybersecurity threats. To do so, they engaged SIG Cyber.

INSTITUTIONAL PROFILE

Monterey Peninsula College (MPC) is a fully accredited California public community college. With an open admissions policy, the college is known for the excellence of its academic programs and student support services. The college has been recognized as a top military-friendly school.

MPC offers over 100 degree and certificate programs to prepare students for transfer to four-year institutions, provide career and technical training, update work skills, and to improve basic proficiency in mathematics, writing, reading, and English as a Second Language.

As part of the Associate Degree for Transfer program with California State University (CSU), MPC currently offers 14 transfer degrees with guaranteed admission to CSU. Degrees include: Administration of Justice, Anthropology, Art History, Business Administration, Communication Studies, Computer Science, Early Childhood Education, History, Mathematics, Physics, Political Science, Psychology, Sociology, and Studio Arts.

The college has a growing distance education program, MPC Online and is also a community resource for lifelong learning opportunities.

Cybersecurity Assessment

BENEFITS

MPC made tremendous progress working to improve its cybersecurity posture. The work done by SIG Cyber resulted in greater alignment between MPC leadership and IT.

MPC now has measurable goals and tasks are in place with associated timelines. Further, MPC now has an established benchmark to measure its cybersecurity posture and can use it to report accurately to MPC executive leadership.

Together, SIG Cyber and MPC prioritized MPC's cybersecurity risks, allocated the appropriate resources to address them, and established a roadmap for a strong cybersecurity posture going forward. Additionally, through a comprehensive penetration test, SIG Cyber was able to assist MPC in creating a prioritized list of vulnerabilities to address in order to improve their overall security hygiene.

SIG APPROACH

To determine gaps in best practices and to develop a roadmap to reduce future risk, SIG Cyber examined the MPC information technology environment against an industry recognized cybersecurity framework, the Center for Internet Security Version 8 controls.

SIG Cyber collaborated with MPC team members to review existing tools, processes, and documentation to determine gaps in compliance with cybersecurity best practices.

SIG Cyber then used its industry knowledge of cybersecurity and campus environments to develop a roadmap of action items for campus staff to implement to reduce risk.

“ SIG Cyber has been instrumental in assisting our team with aligning our cybersecurity program with best practices. The services they have been able to provide such as framework/firewall assessments, penetration testing, and vCISO support have assisted our existing team members in improving our cybersecurity posture and meeting regulatory requirements. ”

~Monterey Peninsula College